

*Shelters • Benches • Trash Receptacles • Ash Urns  
Information Displays • Ad Kiosks, Benches & Ad Shelters  
Solar Lighting Options • Custom Designs To Suit Any Project*

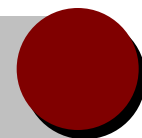
Lacor Streetscape specializes in the design and manufacture of unique Urban, Landscape and Transit furniture that combines durable materials into elegant and distinctively crafted solutions for the needs of public and private environments.

Our diverse collection of products are recognized as extremely vandal resistant, compliant to ADA issues, splendidly responsive to environmental conditions and are utilized for numerous award-winning projects.

Lacor Streetscape designs are used by municipalities, transit agencies, shopping centers, office parks, health care facilities, colleges and universities, museums, parks, hotels and many other public places.

For more than 15 years Lacor Streetscape has provided urban and landscape products for projects – large and small – throughout the United States and Mexico.

The offices and manufacturing facilities of Lacor Streetscape are located in Phoenix, Arizona.



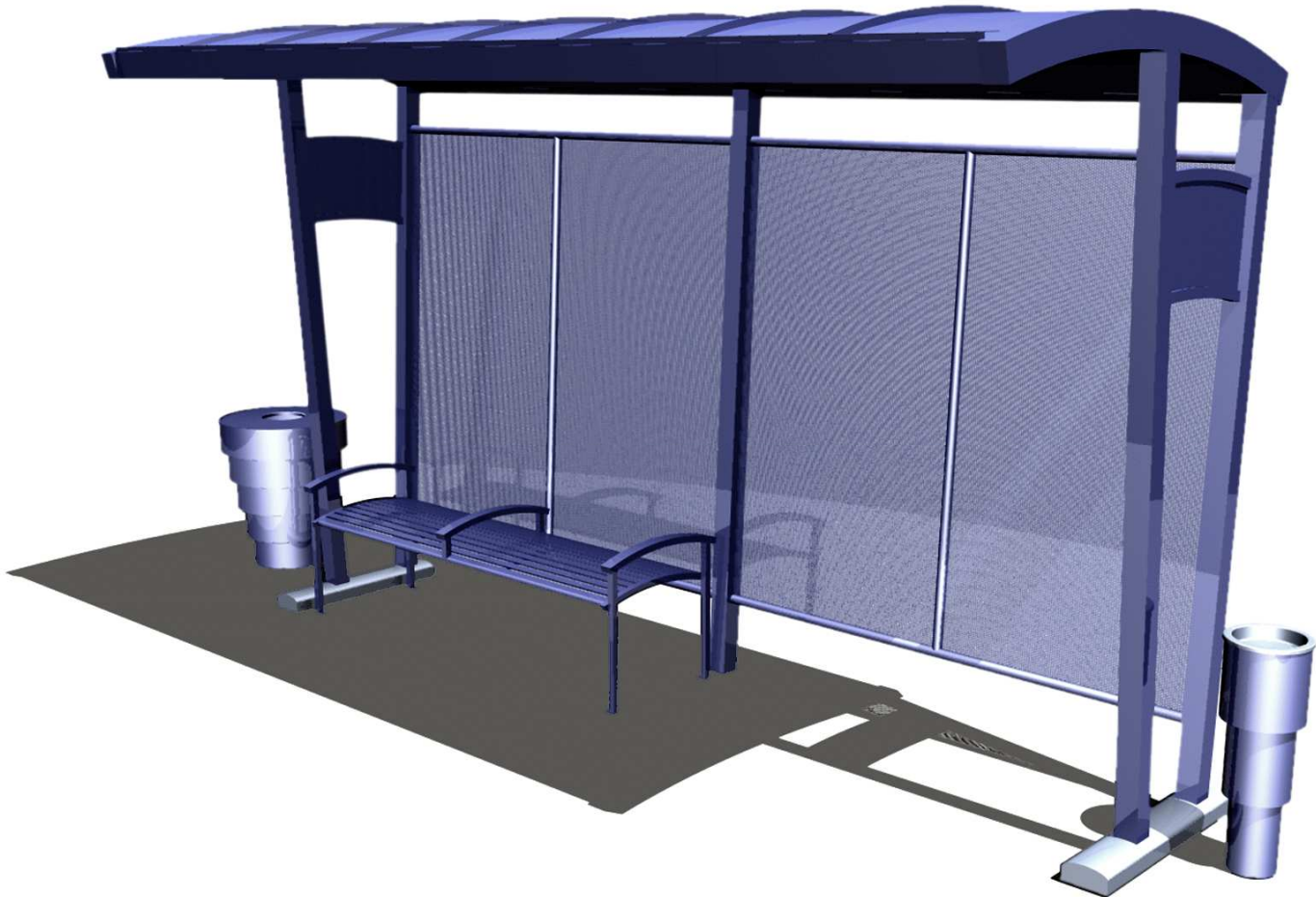




Sharp angles contrasted by curved planes and a cantilevered roof make the Arcadia collection an excellent compliment to progressive locations and contemporary environments.

Modern materials such as standing-seam roofing and perforated steel screening ensure a long-lived product and contribute to this collection's modern aesthetic.

The Arcadia collection includes a variety of shelter sizes and configurations, two bench designs in several variations featuring square-steel tubing and many seating-surface options, a unique receptacle with lid, separate or integral kiosk systems and a wide range of embellishments and options including solar lighting.



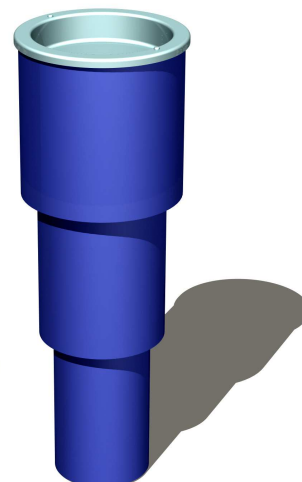
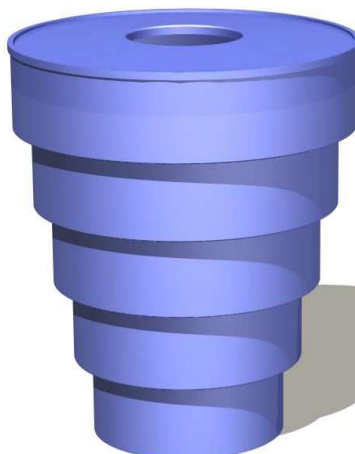


22233 N. 23<sup>rd</sup> Ave. • Phoenix, Arizona 85027 •  
Phone: 602-371-3110 • Fax: 623-492-0343 •  
www.lacorstreetscape.com •

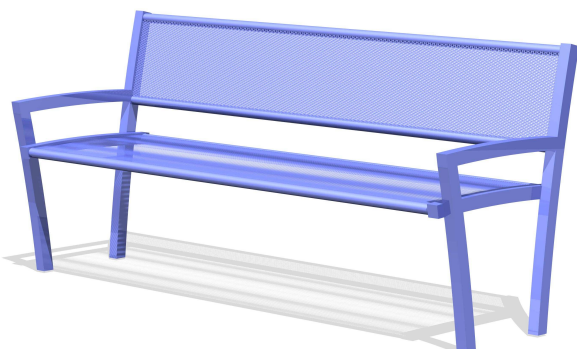
**Lacor**  
**STREETSCAPE**  
Transit, Urban & Landscape  
Furnishings



**12' SHELTER WITH BACK SCREEN - AR12BS**  
MANY SIZES AND CONFIGURATIONS AVAILABLE



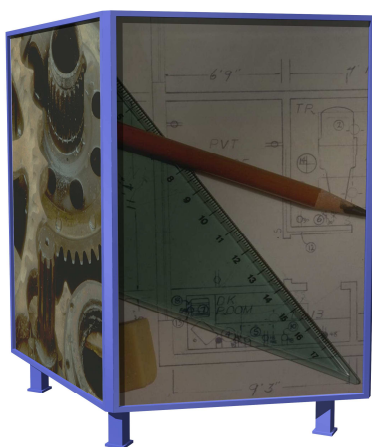
**30 GAL TRASH RECEPTACLE - ARMTR30**  
**ASH URN WITH 8" TRAY - ARAU8**



**6' ARCADIA-MIRAGE BENCH WITH BACK AND ARMS - ARMB A6**  
AVAILABLE IN OTHER LENGTHS AND WITHOUT BACK



**6' BENCH WITH BACK AND ARMS - ARBA6**  
AVAILABLE IN OTHER LENGTHS AND WITHOUT BACK



**STANDARD 3-SIDED KIOSK - ARK3 • WITH ROOF - ARK3R**  
**7' WIDE KIOSK - ARK7**



**ADVERTISING SHELTER - AR12AD**



**ITEMS FROM THE ARCADIA COLLECTION**



Heritage is a traditional collection with Victorian influences, perfectly suited to historically-themed or classic public spaces.

The shelters feature a hip roof with standing-seam roofing with either an open leg design or a variety of options in shade and weather screening.

The amenities in this collection are excellent stand-alone pieces for such sites as malls, parks, garden settings and plazas, and include curved steel-slat trash receptacles with lids and matching ash urns. The benches are constructed of steel slats either horizontally or curved vertically and provide a distinguished profile and very comfortable seating.







22233 N. 23<sup>rd</sup> Ave. • Phoenix, Arizona 85027 •  
Phone: 602-371-3110 • Fax: 623-492-0343 •  
[www.lacorstreetscape.com](http://www.lacorstreetscape.com) •

**Lacor**  
**STREETSCAPE**  
Transit, Urban & Landscape  
Furnishings



**10' SHELTER - HE10**



**10' SHELTER WITH BACK SCREEN - HE10BS**



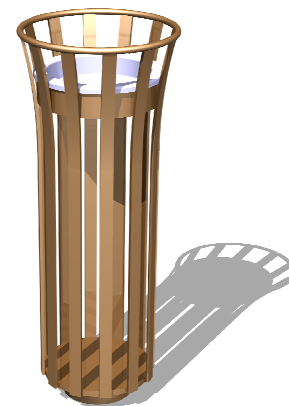
**6' BENCH WITH HORIZONTAL SLATS - HEBA6H**



**6' BENCH WITH CURVED SLATS - HEBA6**  
**SHOWN WITH OPTIONAL VANDAL BAR/MIDDLE ARM**



**30 GAL CURVED SLAT TRASH RECEPTACLE - HETR30**



**ASH URN WITH 8' TRAY - HEAU8**



**ITEMS FROM THE HERITAGE COLLECTION**



The Horizon collection, with extruded aluminum fascia and Prairie/Craftsman styling, is the most varied and versatile line in the Lacor Streetscape catalog.

Constructed of modular elements, shelters are available in sizes up to 40 feet long with 3 choices of roofing materials in three styles (arch, hip or gable), a steel or aluminum chassis, shade/weather screening of perforated steel, safety glass or polycarbonate and with several integral or free-standing kiosks.

Horizon trash receptacles with lids and ash urns are constructed of straight steel slats which can be installed as freestanding elements or attached to the shelter legs. The benches, also with a straight steel slat design, come with or without backs and arms, and are available with optional kiosk displays and vandal bars







22233 N. 23<sup>rd</sup> Ave. • Phoenix, Arizona 85027 •  
 Phone: 602-371-3110 • Fax: 623-492-0343 •  
[www.lacorstreetscape.com](http://www.lacorstreetscape.com) •

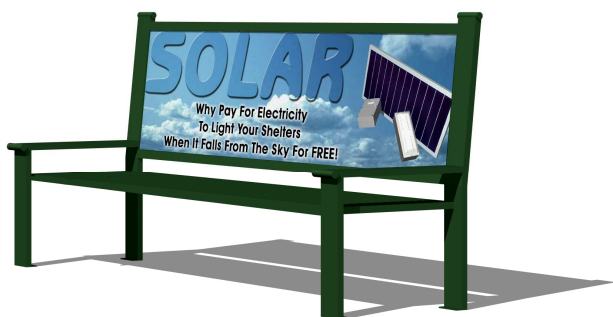
**Lacor**  
**STREETSCAPE**  
 Transit, Urban & Landscape  
 Furnishings



**13' SHELTER WITH BACK SCREEN - HZ13BS**  
 AVAILABLE IN MANY CONFIGURATIONS AND SIZES



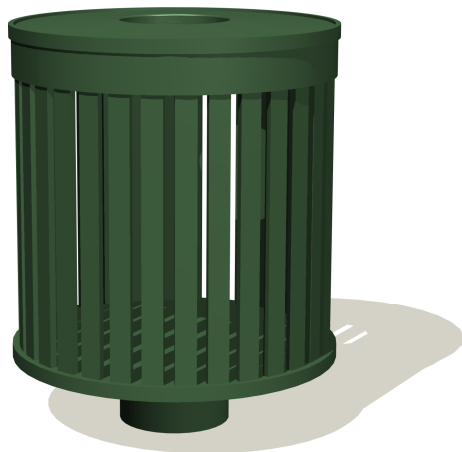
**13' SHELTER WITH FLAT KIOSK - HZ13AD-A**  
 TRIANGULAR KIOSKS ALSO AVAILABLE



**7' ADVERTISING BENCH - HZBA7AD**  
 OTHER LENGTHS AND KIOSK SIZES AVAILABLE



**6' BENCH WITH BACK AND ARMS - HZBA6**  
 OTHER LENGTHS AVAILABLE



**30 GAL TRASH RECEPTACLE - HZTR30**  
**20 GAL TRASH RECEPTACLE - HZTR20**



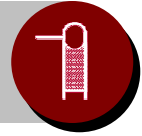
**ASH URN - HZAU8**



**SIDE-OPENING 30 GAL TRASH RECEPTACLE**  
**HZTR30D**



**ITEMS FROM THE HORIZON COLLECTION**

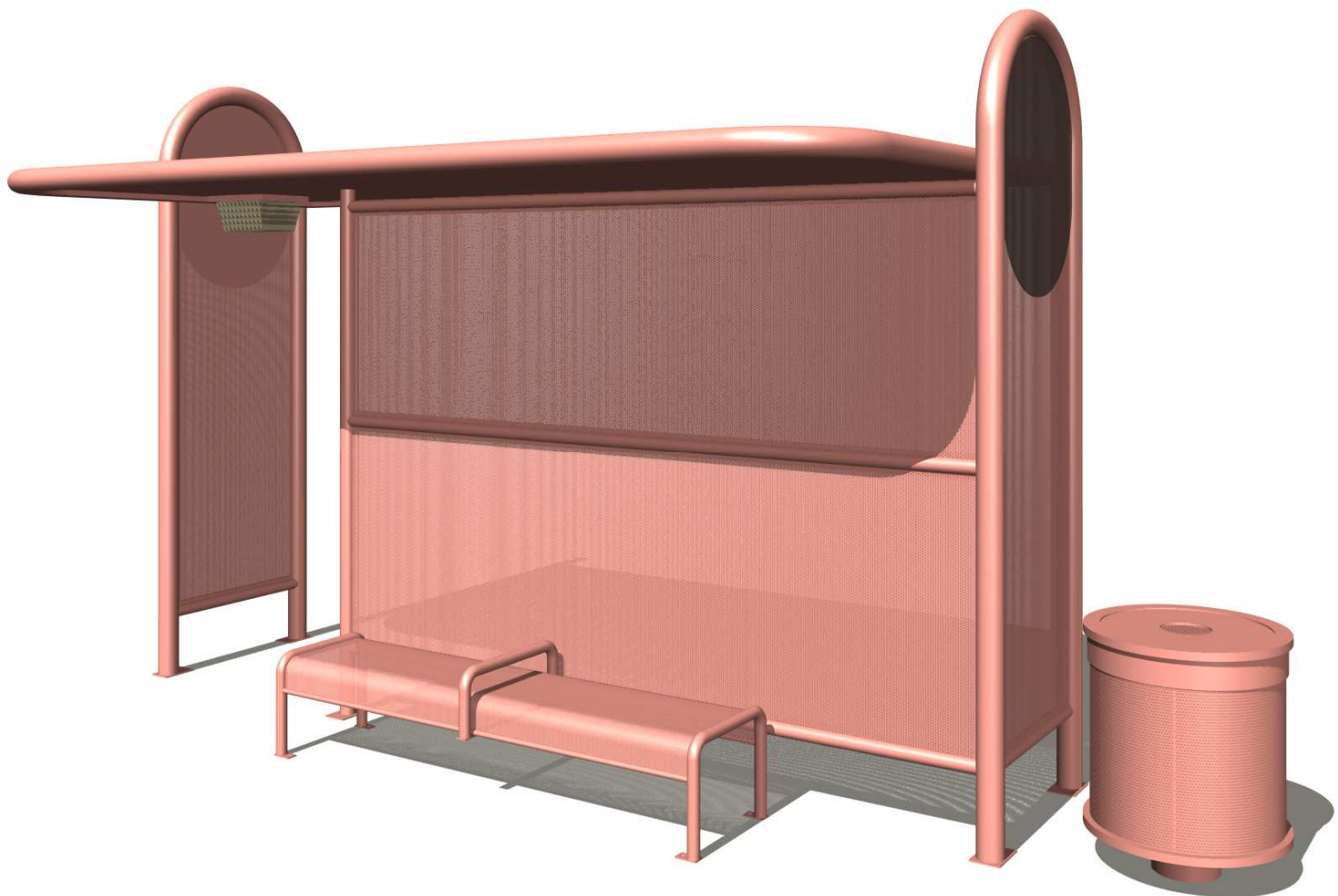


With its rounded edges and bent-pipe curves the Oasis collection has long been an industry standard, with original models still on their sites and serving the public for nearly 20 years.

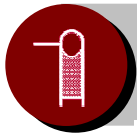
Perforated-steel seating surfaces and screens allow cooling air circulation, and coupled with round-tube and curved structural elements this collection meets the needs of its users with comfort, attractive style, exceptional strength, durability, safety, vandal resistance and ADA access sensitivity.

Oasis shelters are available in many sizes and shade-screen configurations with five bench variations, matching trash receptacles, free-standing ash urns, leaning rails, free-standing shade screens, ad benches, optional solar lighting packages and ad kiosks - integral, wall mounted or free standing.

The shelters in the Oasis Collection are all solid-welded, requiring no assembly at installation

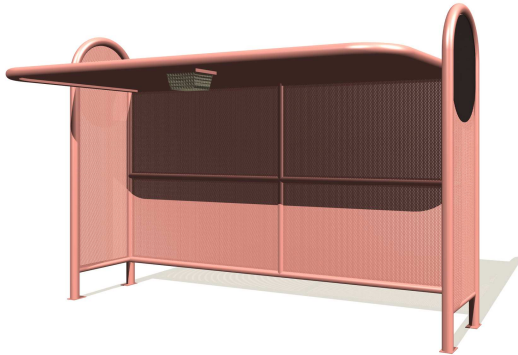






22233 N. 23<sup>rd</sup> Ave. • Phoenix, Arizona 85027 •  
Phone: 602-371-3110 • Fax: 623-492-0343 •  
[www.lacorstreetscape.com](http://www.lacorstreetscape.com) •

**Lacor**  
**STREETSCAPE**  
Transit, Urban & Landscape  
Furnishings



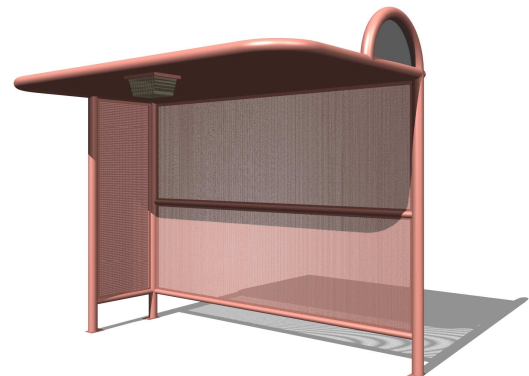
**13' SHELTER WITH BACK SCREEN - OA13BS**



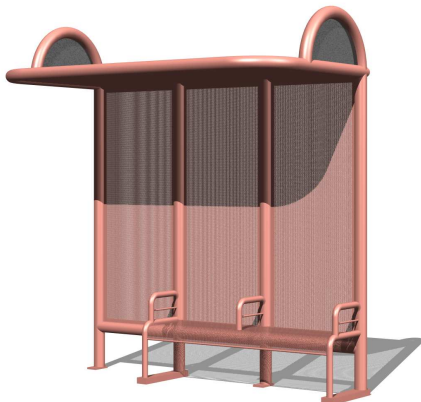
**13' ADVERTISING SHELTER - OA13AD**  
**7' ADVERTISING BENCH - OABA7AD**



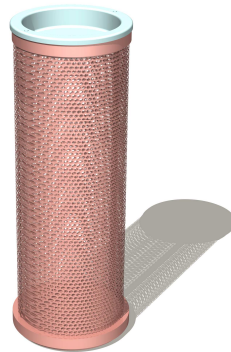
**12' SHELTER WITH BACK SCREEN - OA12BS**  
**10' SHELTER WITH BACK SCREEN - OA10BS**



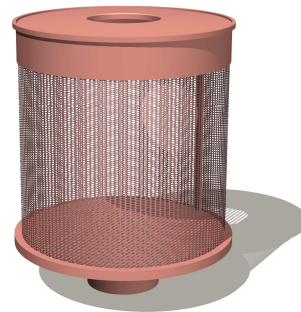
**8' SHELTER WITH BACK SCREEN - OA8BS**



**8' SHELTER-BENCH UNIT**  
**OA8SBU**



**ASH URN WITH 8' TRAY**  
**OAAU8**



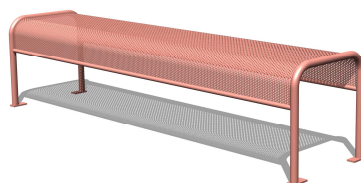
**30 GAL TRASH RECEPTACLE**  
**OATR30**



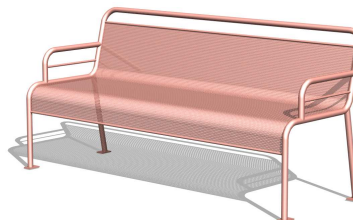
**ADVERTISING KIOSK**  
**OAK3**



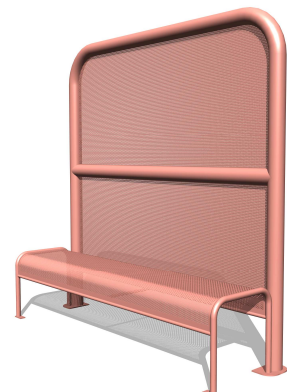
**6' BENCH WITH ARMS**  
**OAB6**



**6' STANDARD BENCH**  
**OASB6**



**6' BENCH WITH BACK AND**  
**ARMS - OABA6**



**6' SCREEN-BENCH COMBO**  
**OA6BSB**

**OA**

**ITEMS FROM THE OASIS COLLECTION**

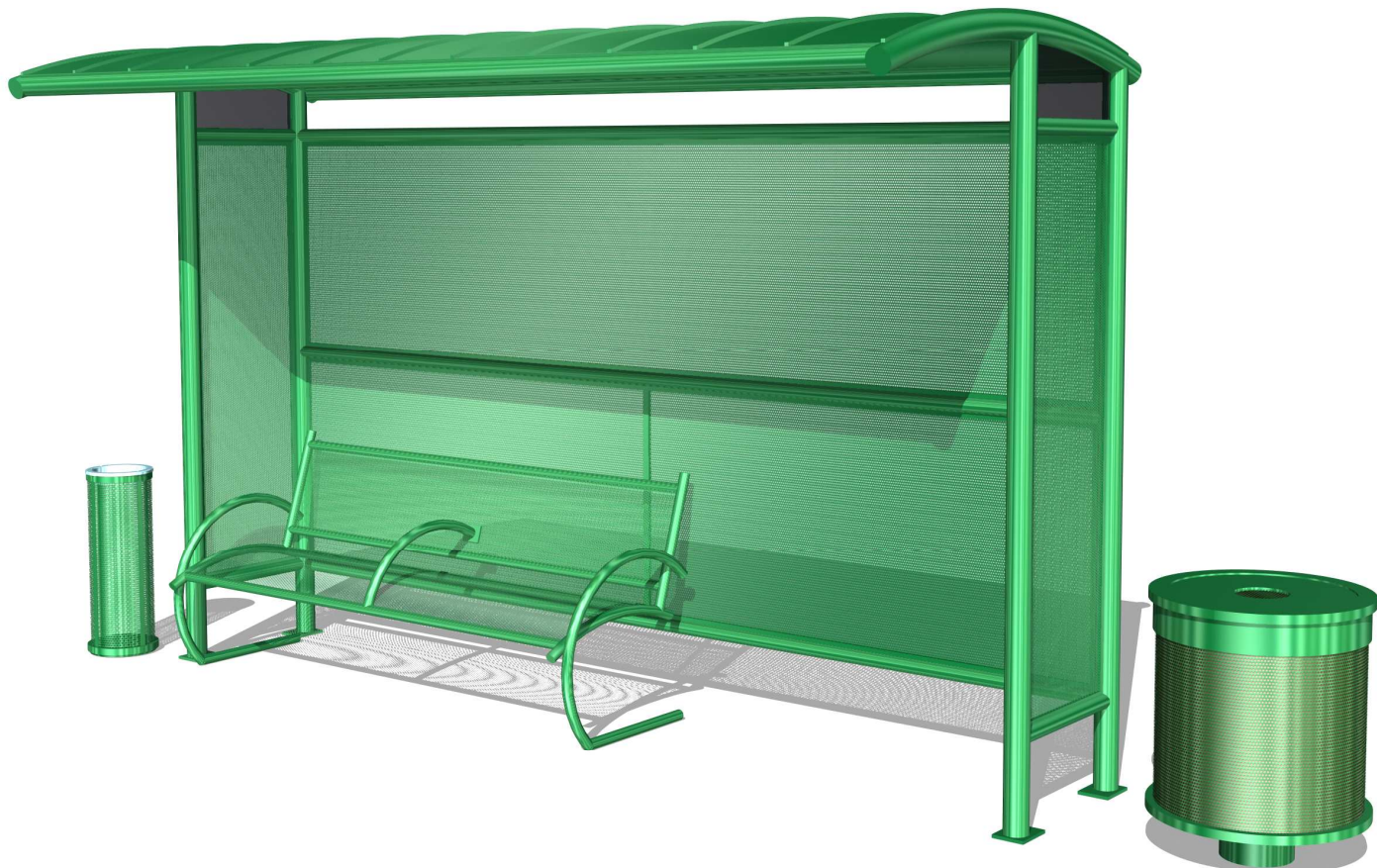


The Primavera collection is quickly establishing itself as the shelter of choice. Constructed of round steel tubing with a metal, barrel-vaulted standing-seam roof, Primavera is designed to fit into a wide variety of environments without conflicting with existing architectural themes.

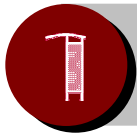
Perforated-steel seating surfaces and screens allow cooling air circulation, and coupled with round-tube and curved structural elements this collection meets the needs of its users with comfort, attractive style, exceptional strength, durability, safety, vandal resistance and ADA access sensitivity. The shelter's modular design, with removable roof assembly, allows for greater value in shipping and ease in installation and maintenance.

This collection features many shelter sizes and shade screen configurations, a smaller mini-shelter with integral benches, an array of kiosk options, free-standing shade screens, resting bars, the attractive curved-arm Primavera bench and other options such as solar lighting systems. Shade/weather screening choices include perforated steel, safety glass and polycarbonate.

These pieces also match well with the Lacor Oasis collection benches, trash receptacles and ash urns..





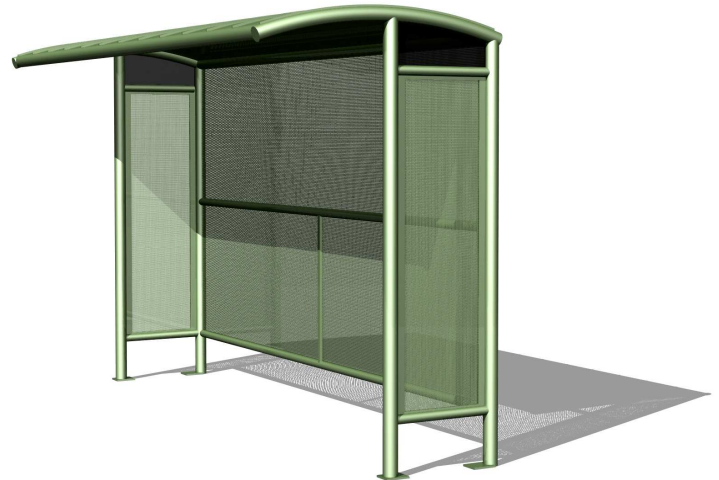


22233 N. 23<sup>rd</sup> Ave. • Phoenix, Arizona 85027 •  
Phone: 602-371-3110 • Fax: 623-492-0343 •  
www.lacorstreetscape.com •

**Lacor**  
**STREETSCAPE**  
Transit, Urban & Landscape  
Furnishings



**13' SHELTER WITH MID-SCREEN - PM13MS**



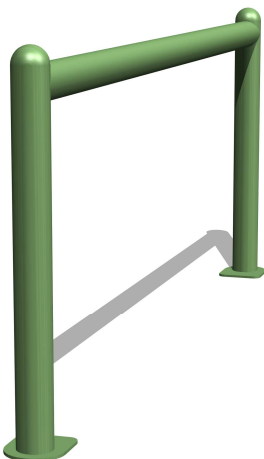
**12' SHELTER WITH BACK SCREEN - PM12BS**



**13' ADVERTISING SHELTER - PM13AD**



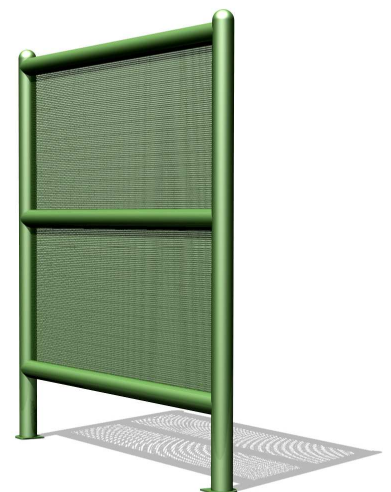
**9' SHELTER-BENCH UNIT WITH ADA SPACE - PM9BR**



**6' RESTING BAR/BIKE RACK  
PM6RB**



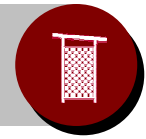
**6' BENCH WITH BACK AND ARMS - PMBA6  
SHOWN WITH OPTIONAL VANDAL BAR/MIDDLE ARM**



**6' SHADE SCREEN  
PM6SCR**



**ITEMS FROM THE PRIMAVERA COLLECTION**



The Park collection offers exceptional function and value with aesthetics that can fit the context of both rural and urban environments. The completely modular design of the shelter allows for ease in shipping, installation, maintenance and variability in shade/weather screening materials. The angled, standing-seam roof sheds rain and provides an excellent base for optional solar lighting systems. The stadium-style bench and mesh trash receptacle with lid are proven designs.

Options for this collection include shade/weather screening in perforated steel or safety glass, standing-seam roofing variations, vandal bars for the benches, connectors allowing the trash receptacles to be pole-mounted to the shelter and decorative elements at the tops of the shelter legs.







22233 N. 23<sup>rd</sup> Ave. • Phoenix, Arizona 85027 •  
Phone: 602-371-3110 • Fax: 623-492-0343 •  
www.lacorstreetscape.com •

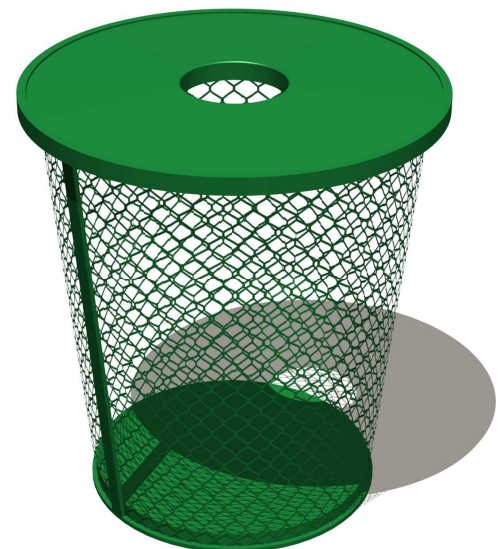
**Lacor**  
**STREETSCAPE**  
Transit, Urban & Landscape  
Furnishings



**11' SHELTER WITH STANDING-SEAM ROOF AND BACK SCREEN - PK11BS**



**6' BENCH WITH BACK - PKBB6**  
SHOWN WITH OPTIONAL MIDDLE ARM



**30 GAL MESH TRASH RECEPTACLE - PKTR30**  
SHOWN WITH OPTIONAL LID



**ITEMS FROM THE PARK COLLECTION**



The Paragon collection features several pieces with a decidedly custom appearance, well suited for public spaces such as museums, theaters, exclusive retail spaces and other unique environments.

The theme of curved round tubing and arched planes give the shelter a light, canopy feel and provides a well shaded interior that still feels very open.

The bench and trash receptacle elaborate this progressive motif with perforated steel seating surfaces and a stepped, horizontally banded trash container with lid.





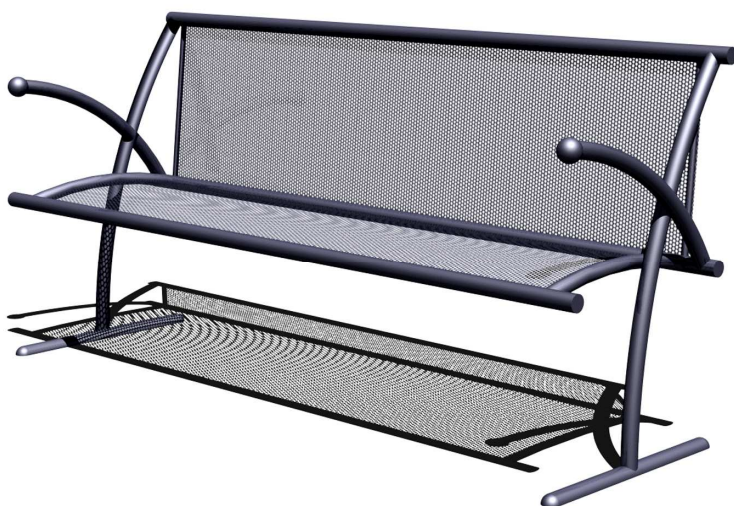


22233 N. 23<sup>rd</sup> Ave. • Phoenix, Arizona 85027 •  
Phone: 602-371-3110 • Fax: 623-492-0343 •  
[www.lacorstreetscape.com](http://www.lacorstreetscape.com) •

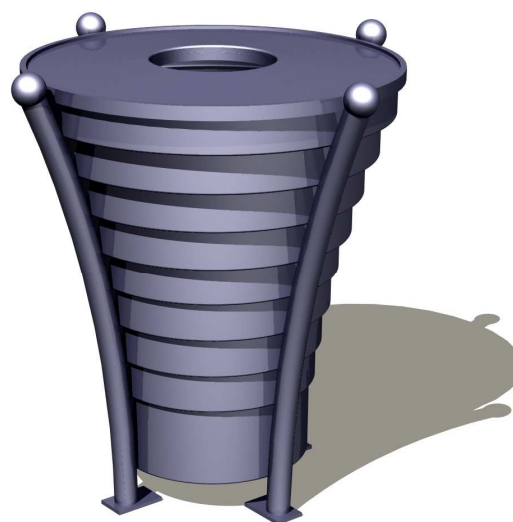
**Lacor**  
**STREETSCAPE**  
Transit, Urban & Landscape  
Furnishings



**10' SHELTER WITH STANDING-SEAM ROOF - PG10**



**6' BENCH WITH BACK AND ARMS - PGBA6**



**30 GAL TRASH RECEPTACLE - PGTR30**



**ITEMS FROM THE PARAGON COLLECTION**